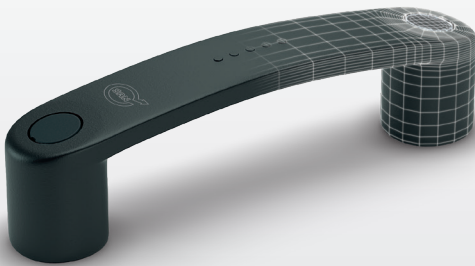


# Components for medical equipment, precision instruments, rehab and disability aids

---



DESIGNED  
FOR ENGINEERING

# TWO COMPANIES ONE WORLD OF STANDARD PARTS



**ELESA+GANTER** is a worldwide sales joint-venture set-up to offer the widest product range of standard machine elements for the mechanical industry. Highly reliable products ensuring perfect functionality with a unique design represents the ELESA+GANTER distinctive quality code.

## DESIGNED FOR ENGINEERING

Designing and manufacturing technical solutions for the mechanical industry represent the achievement and the commitment of Elesa and Ganter. A guarantee for leading-edge benefits for the customers.



DESIGNED  
FOR ENGINEERING

## POINTS OF STRENGTH

- Technological background from the two established parent companies
- Innovation in combination with decades of experience
- Unique design
- Optimised and widest product range of standard machine elements, driven by the market
- Worldwide distribution network
- Full stock availability with fast delivery times
- Customised solutions
- Perfect service including technical assistance



# STANDARD COMPONENTS

## FOR MEDICAL EQUIPMENT, PRECISION INSTRUMENTS, REHAB AND DISABILITY AIDS

**ELESA+GANTER**, leader in the design and manufacture of components in engineering plastics and metal, presents in this leaflet components designed for medical equipment, precision instruments, rehab and disability aids even for applications requiring the use of corrosion resistant materials in compliance with the most rigorous hygienic laws.

### EXTRACT FROM OUR WIDE PRODUCT RANGE OF STANDARD MACHINE ELEMENTS:

#### CLEAN



#### SOFT - TOUCH



#### INOX - STAINLESS STEEL



## NEW PRODUCT LINES FOR MEDICAL EQUIPMENT

### HYGIENIC DESIGN



### SAN



In the food industry, medical technology and the pharmaceutical industry, product safety and consumer protection are becoming increasingly important.

Due to their specific properties, standard parts in Hygienic Design can assist the production process in these sensitive areas and facilitate the manufacture of products with a long shelf life, which are free from preservatives.

The SAN line offers two solutions: standard components in technopolymer with silver ion additives and metal standard parts with a powder coating based on zinc molybdate.

The special antimicrobial technopolymer prevents the proliferation of unhealthy bacteria and fungi by penetrating the surface of the cells and attacking their DNA. The powder coatings with an additive based on zinc molybdate have a powerful antibacterial effect by ensuring a constant reduction in microorganisms, preventing their growth and disrupting their ability to establish themselves on the surfaces.



## CLEAN

# White for dirt-proof surfaces

RAL 9002 white colour is particularly suitable in medical environments, as it allows the prompt identification of any dust or dirt traces, making cleaning operations easier. From a psychological point of view, it also gives the operators and the patients a sense of sterility and maximum cleanliness. Compact shapes and lack of cavities allow avoiding any deposit of dirt, dust and machining residues. ELESA+GANTER product range includes an assortment of handles and clamping knobs in white technopolymer, also with stainless steel inserts.



Application of M.843 bridge handle



M.843 -CLEAN



GN 426



GN 565



CFU-CLEAN

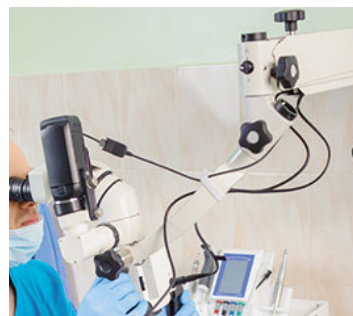


## SOFT-TOUCH

# Comfortable and safe grip

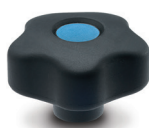
SOFT-TOUCH product line features a soft and slip-proof surface to ensure a safer and more stable ergonomic grip even in the presence of wet or sweat hands. Moreover, SOFT-TOUCH allows a better force transfer between hand and operating elements and ensures the absorption of vibrations during operations.

Standard components in 7 ELECOLORS® to offer a perfect aesthetic compatibility between the components and the machines on which they are installed, enhancing the perception of their value and quality.



Application of VCT.SOFT lobe knobs

elecolors®



VCT-SOFT



EBK-SOFT



EGH-SOFT



VB.839-SOFT



## HYGIENIC DESIGN

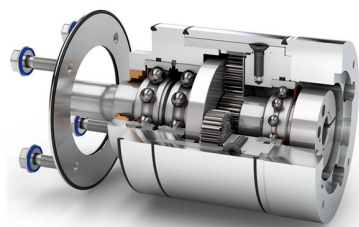
### Hygienic Design product line

In the food industry, medical technology and the pharmaceutical industry, product safety and consumer protection are becoming increasingly important.

Due to their specific properties, standard parts in Hygienic Design can assist the production process in these sensitive areas and facilitate the manufacture of products with a long shelf life, which are free from preservatives.

Less and shorter cleaning work (this can be up to 25% of the production time), therefore

- More time available for the production
- Less fresh water consumption
- Lower energy consumption
- Lower total costs and saving of resources



GN 8170



GN 20



## SAN

### Sanitisation against bacteria and fungi

SAN products avoid reproduction of undesired bacterial organisms which can cause unpleasant odours, discoloration, degradation and formation of biofilm on surfaces.

Handles and knobs are available in antimicrobial technopolymer with silver ion additives against bacteria and fungi and metal standard parts with an antibacterial powder coating based on zinc molybdate.



Application of EBP-SAN (image source: Mudita Breath Machine, mudita.com)



VTT-SAN



EBP-SAN



GN 426



GN 565



**INOX**

## Stainless Steel corrosion resistance

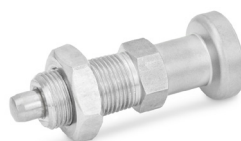
Standard parts made of rust-proof Stainless Steel grades- designed for use in the food industry, the chemical industry or in general for use in aggressive atmospheres or outdoors. Normally made with galvanic surface treatment, standard parts in the Stainless Steel product family are not only corrosion-resistant, but also precisely fitting and environmentally friendly.



- Excellent corrosion resistance
- Durable
- Robust



GN 300.5



GN 617



GN 237

Stainless steel is one of the most sought-after material for applications in sectors where provisions of law make it mandatory to use corrosion-resistant materials. ELESa+GANter product range includes a wide assortment of products in engineering plastics with AISI 303, AISI 304 and AISI 316 stainless steel inserts.



Application of VB.639-SST three-arm knobs with AISI stainless steel inserts



EWN-SST



VB.639-SST



CT.476-SST



## STANDARD MACHINE ELEMENTS

# For manoeuvring, clamping and control operations

ELESA+GANTER presents a selection of handwheels, knobs, adjustable levers, bridge or tubular handles and indexing plungers available in technopolymer, stainless steel, steel, aluminum or zinc die casting with the greatest care to surface finishing.



### VDS+I

#### Solid handwheels with revolving handles

Technopolymer

Diameters: 83 to 300 mm



### GN 5335

#### Stainless Steel-Star knobs

Matte shot-blasted or highly polished

Diameters from 40 to 60 mm



### MBT.

eleCOLORS®

#### Diamond cut knurled knobs

Technopolymer

Brass boss, plain or threaded blind hole; zinc-plated steel threaded stud

Diameters: 30 - 40 - 50 - 60 - 70 mm



Application of VDS+I solid handwheel with revolving handle



Application of GN 5335 stainless steel-star knobs



Application of MBT. diamond cut knurled knobs



### GN 300.5

#### Adjustable Stainless Steel-Hand levers

Matte shot-blasted, with bushing / with threaded stud



### ETH-AN

#### Tubular handles

Anodised aluminium tube; technopolymer handle shanks; side caps in Elecolors® colours

Assembly centre distance: 300 to 1000 mm

ERGOSTYLE®  
eleCOLORS®



### GN 822

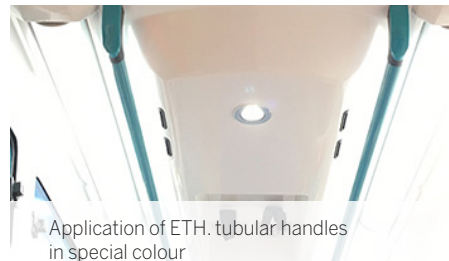
#### Mini indexing plungers

Steel or Stainless Steel

Covered indexing mechanism, with and without rest position  
Bolt Diameters from 4 to 7mm



Application of GN 300.5 adjustable Stainless Steel-Hand levers



Application of ETH-AN tubular handles in special colour



Application of GN 822 mini indexing plungers



Find out more on **elesa-ganter.com**

ELESA S.p.A.  
Via Pompei 29  
20900 Monza (MB)  
Italy  
+39 039 28 111  
info@elesa.com  
**elesa.com**

OTTO GANTER GmbH & Co.KG  
Triberger Straße 3  
78120 Furtwangen  
Germany  
+49 7723 65 07 0  
info@ganternorm.com  
**ganternorm.com**



**DESIGNED  
FOR ENGINEERING**